

Middle End Trees

29. **Slippery elm** 43.647194,-79.413615
30. **Crimean linden** 43.647331,-79.414392
31. **Bur oak** 43.647360,-79.414565
32. **Swamp white oak** 43.647423,-79.414564
33. **Common linden** 43.647477,-79.414513
34. **Ohio buckeye** 43.647804,-79.415397
35. **Smooth or Allegheny serviceberry**
43.647886,-79.415494
36. **Japanese zelkova** 43.648042,-79.415006
37. **Scotch elm** 43.648379,-79.415320
38. **Northern red oak** 43.648579,-79.414794
39. **Grey alder** 43.649031,-79.414249

North End Trees

40. **Black locust** 43.649979,-79.414447
41. **Norway maple** 43.648934,-79.415714
42. **Blue or Colorado spruce** 43.649118,-79.416007
43. **Douglas-fir** 43.649218,-79.416079
44. **White oak** 43.649323,-79.415840
45. **White spruce** 43.649440,-79.415887
46. **Ohio buckeye** 43.649848,-79.416571
47. **Red maple** 43.649546,-79.417000
48. **Sugar maple** 43.649683,-79.417158
49. **Red or green ash** 43.649809,-79.417799
50. **White ash** 43.649792,-79.417886
51. **Tulip-tree** 43.649485,-79.417808
52. **Catalpa sp.** 43.649349,-79.417749
53. **Schubert cherry** 43.649179,-79.417828
54. **Sycamore maple** 43.649194,-79.417592

Learn more about these trees at
www.canadiantreetours.org/trees.html

Trinity-Bellwoods Park

The 37-acre Trinity Bellwoods Park in Toronto's west end boasts 65+ species of trees, of which 50 are in this tour. Several trees are over 100 yrs old, dating to when the Trinity College buildings stood here (1853-1956), and before that when Garrison Creek ran through the park. In 1912 the City of Toronto bought the campus when the college moved to U. of T., and combined it with Bellwoods Park to create Trinity-Bellwoods Park. The remaining structure from Trinity College is St. Hilda's College built in 1899, now called John Gibson House. The college's gates were restored in 2007 gracing the park's main south end entrance.

Grove of Sakura Cherry trees

The Japanese Consulate donated to the city the ornamental cherry grove in the south-east corner of the park in early spring 2010 as part of their international Sakura Project. In their first year they produced clouds of beautiful blossoms. Sakura cherry trees (*Prunus x yedoensis*) don't produce fruit, or only a very few small ones. The two varieties planted here are Yoshino with white blossoms and Akebono with pink tinged blossoms. Depending on the spring weather, these trees bloom in April or May for about ten days.

Oldest Tree in the Park

It is said that the oldest tree in the park is the Bitternut Hickory (#10) on the south-west fence line of the tennis courts. Other contenders would be the Slippery Elm (#29) just north of the circle and the Red Oak (#38) and its neighbor in the bowl.



Free



Trinity-Bellwoods Park Tree Tour

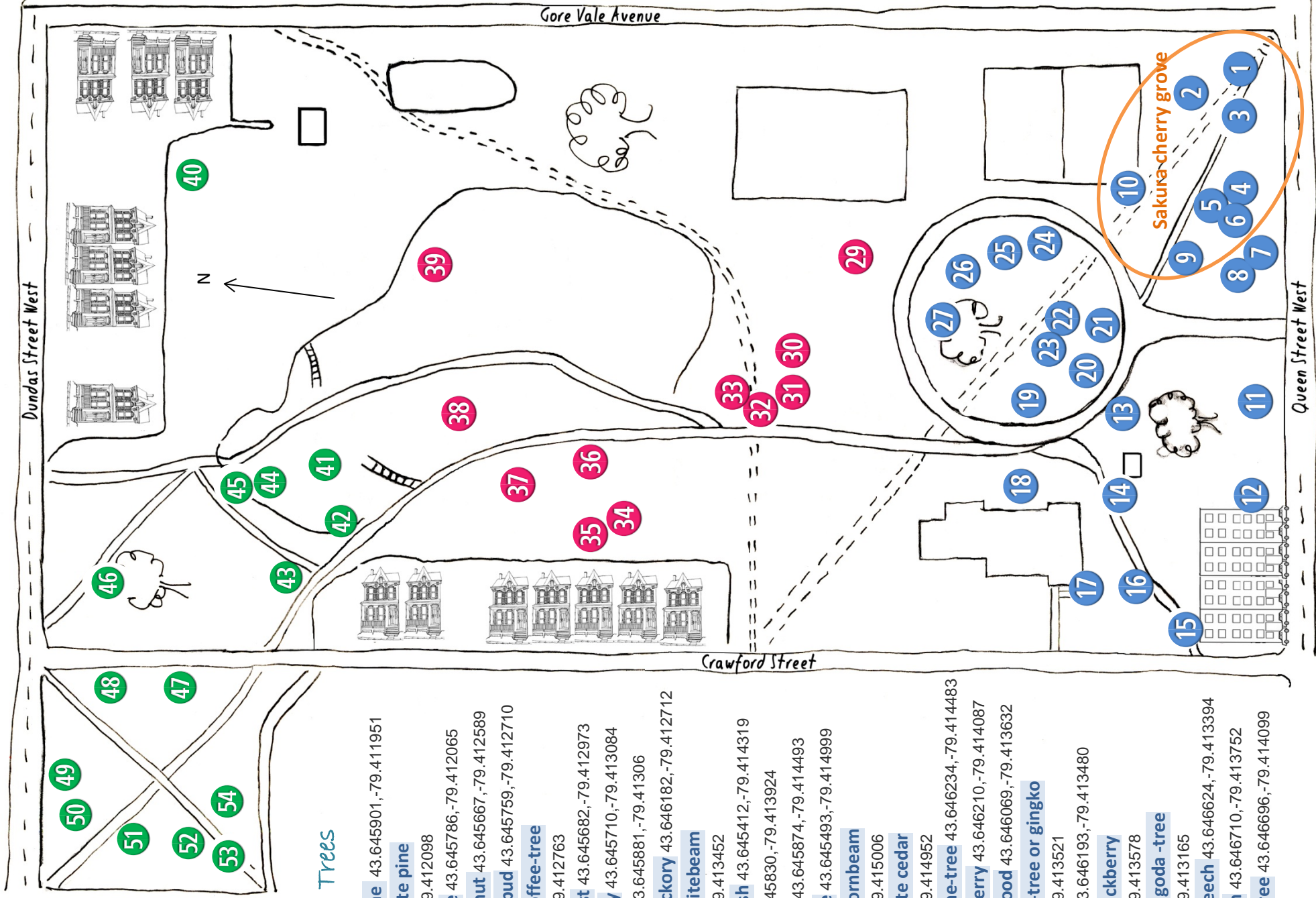
Canadian Tree Tours



For more information
www.canadiantreetours.org
www.trinitybellwoods.ca

Self-guided  Smartphone friendly

Trinity Bellwoods Park Tree Tour



South End Trees

1. **Austrian pine** 43.645901,-79.411951
2. **Eastern white pine** 43.645948,-79.412098
3. **Silver maple** 43.645786,-79.412065
4. **Horsechestnut** 43.645667,-79.412589
5. **Eastern redbud** 43.645759,-79.412710
6. **Kentucky coffee-tree** 43.645679,-79.412763
7. **Honey locust** 43.645682,-79.412973
8. **Chokecherry** 43.645710,-79.413084
9. **Crabapple** 43.645881,-79.41306
10. **Bitternut hickory** 43.646182,-79.412712
11. **Swedish whitebeam** 43.645391,-79.413452
12. **European ash** 43.645412,-79.414319
13. **Pin oak** 43.645830,-79.413924
14. **English oak** 43.645874,-79.414493
15. **Amur maple** 43.645493,-79.414999
16. **European hornbeam** 43.645692,-79.415006
17. **Eastern white cedar** 43.645853,-79.414952
18. **London plane-tree** 43.646234,-79.414483
19. **White mulberry** 43.646210,-79.414087
20. **Dawn redwood** 43.646069,-79.413632
21. **Maidenhair-tree or ginkgo** 43.646049,-79.413521
22. **White ash** 43.646193,-79.413480
23. **Common hackberry** 43.646230,-79.413578
24. **Japanese pagoda - tree** 43.646395,-79.413165
25. **European beech** 43.646624,-79.413394
26. **Siberian elm** 43.646710,-79.413752
27. **Amur corktree** 43.646696,-79.414099